

A MARRIAGE OF AGRICULTURE AND FORESTRY

COOPERATIVE LEAGUE OF THE USA WORKS WITH ZAMBIAN FOREST DEPARTMENT TO DEVELOP JOINT FOREST MANAGEMENT PLANS in Eastern Province, Zambia

Programme coordinator: John Heermans clusa-nrm@zamnet.zm
Principal Extension Officer of Forestry Dept: Bwalya Chendauka

THE OBJECTIVE:

To draw villagers around gazetted local forests into the community-based forest management program

THE STRATEGY:

1. MAINTAIN THE INTEREST OF FARMERS IN THE PROGRAM BY CONCENTRATING DURING 2 YEARS ON AGRICULTURAL ISSUES ALONGSIDE FORESTRY ISSUES

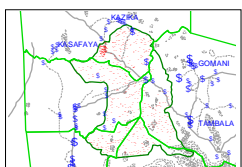
- Provide extension-style training in Conservation Farming around gazetted forest area
- Once CF methods have been exposed to a high proportion of farmers, pressure on the forest for land to clear is reduced because fewer hectares are required to produce the same yields; incomes can even rise
- Provide training and loans for cash cropping and value adding that increase yields and family incomes
- Use agricultural groups in cooperating villages to develop a business structure for marketing of crops and, eventually, of forest products



Crops in strips for easy rotation, weeding, and harvest; groundnuts on ridges; potholed maize.

2. SOLICIT INPUT FROM FOREST USERS ON NAMES OF TREES AND PLANTS INSIDE THE FOREST AND THEIR USES; USE THE INPUT IN AN INVENTORY

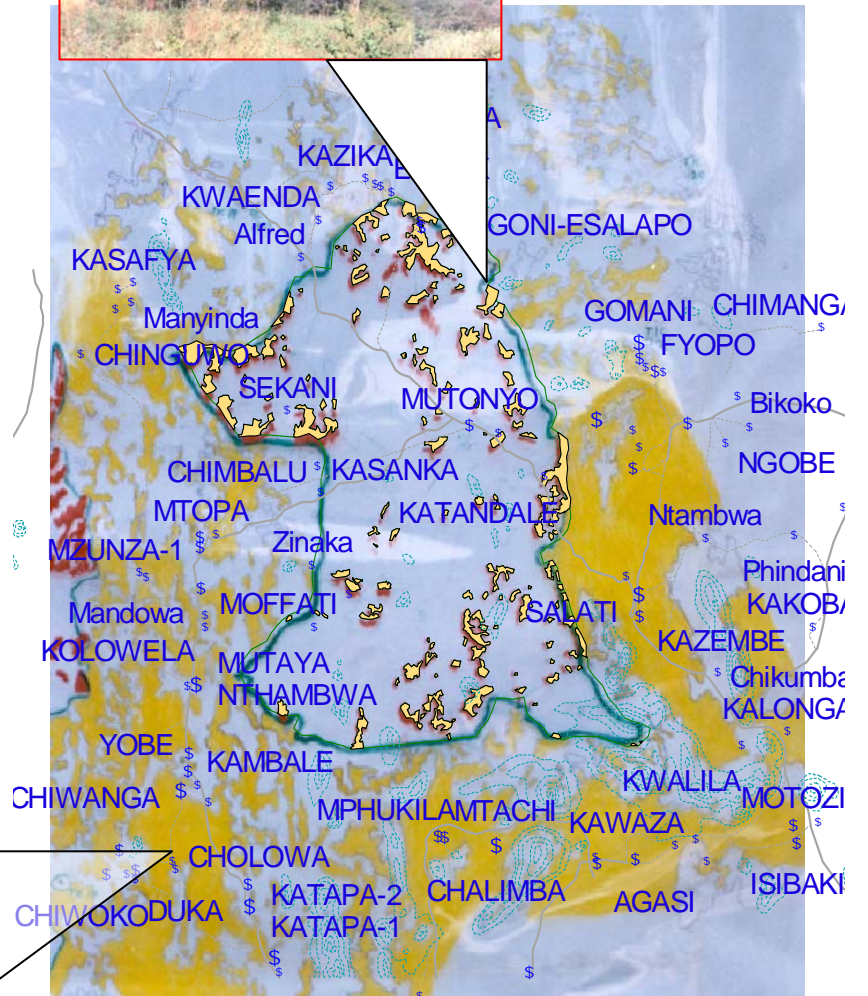
- An adapted "Village Resource Assessment" is carried out in the villages (equivalent to PRA, VRA, MAPPS)
- The yearly needs of forest products, by species, in households around the forest, are documented
- A technical inventory uses villagers on the crew and quantifies data according to user groups



CHIULUKIRE LOCAL FOREST:
Julbernardia globiflora
STOCKING IN
3 SIZE CLASSES
noted from July 2000
Inventory of 10,000 ha



Fields inside



Yellow shading indicates fields outside the forest; orange is 960 hectares of fields inside the forest reserve of 10,800 ha. The pressure on Chiulukire Local Forest for agricultural land for villages surrounding it is evident. SOURCE: 1999 SPOT panchromatic image, 1:25,000 scale

3. BRING THE CONCERNED FARMERS AND TRADITIONAL LEADERS TOGETHER AT WORKSHOPS WITH THE FORESTRY DEPARTMENT PERSONNEL TO DESIGN A PLAN FOR THE FOREST THEY DEPEND ON

- Develop management plan chapters based on products already exploited by surrounding users and the number of people in each user group
- Use questionnaires designed to satisfy each specific user group: charcoal makers, broomcutters, beekeepers, herbalists, hunters, pitsawyers, and others
- Identify conflicting uses of the same types of trees; try to resolve the conflicts by allocating certain numbers to certain groups and by requiring fuller tree use (waste reduction) as a condition for obtaining permits
- Sustainable yields are based on user group inputs plus inventory results of numbers of trees by diameter class (age) to ensure regeneration is taking the place of harvested trees



4. PROVIDE LOGISTICAL SUPPORT AND TECHNICAL TRAINING TO FORESTRY DPT

- Equipment use and mapping skills are taught
- Negotiations, meetings, and workshops are facilitated

