

4. INVENTORY OUTPUT: TREES PER HECTARE by DIAMETER CLASS AND SPECIES

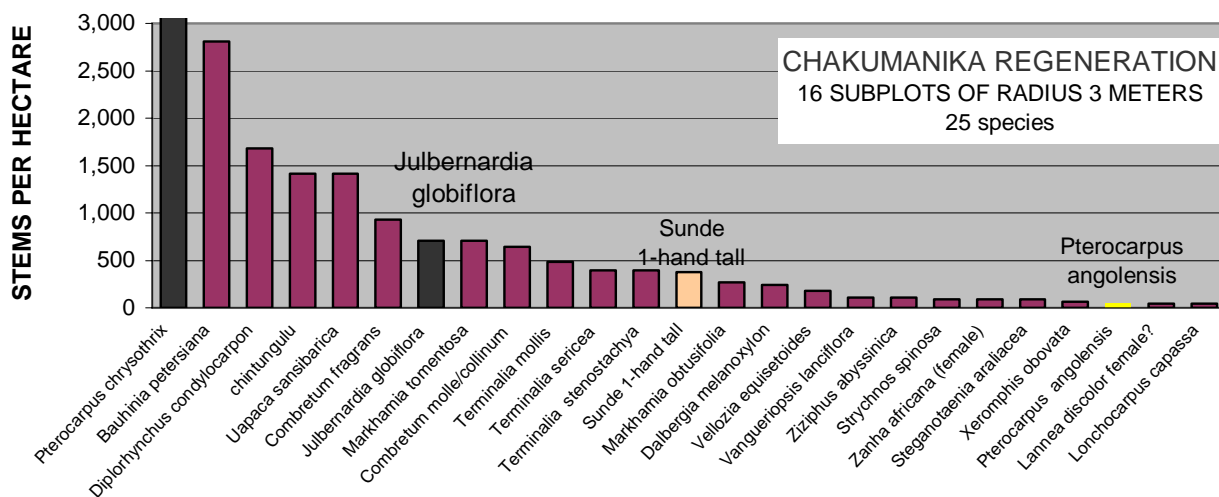
Chakumanika PCF (437 ha, BA = 9.5m²)

Average Trees per HA in class:

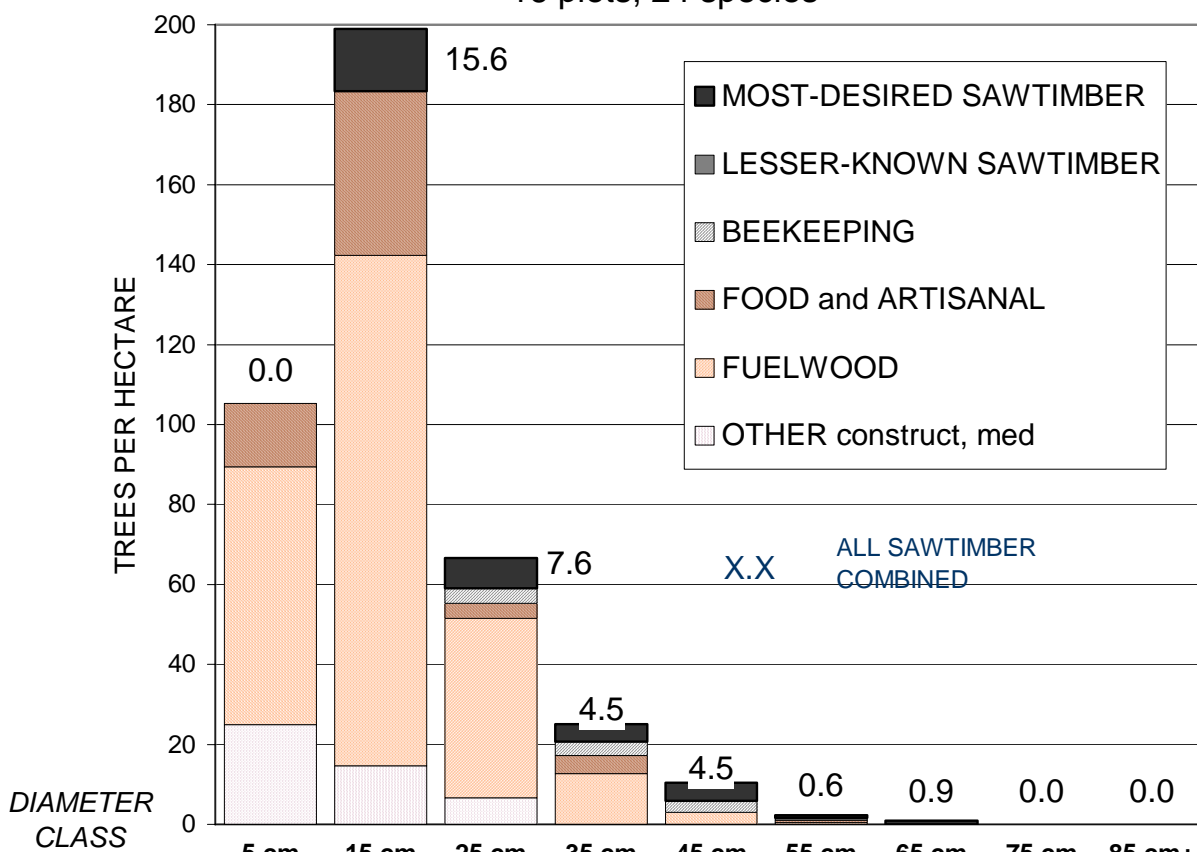
	5cm	15cm	25cm	35cm	45cm	55cm	65cm	75cm	85+cm	AvgBA
<i>Acacia</i>	0.0	14.4	0.0	0.0	0.0	0.0	0.0	0.0	0.0	0.1
<i>Annona senegalensis</i>	15.9	0.0	0.0	1.0	0.0	0.0	0.0	0.0	0.0	0.3
<i>Bauhinia petersiana</i>	0.0	14.4	0.0	0.0	0.0	0.0	0.0	0.0	0.0	0.1
<i>Cassia abbreviata</i>	0.0	0.0	3.9	0.0	0.0	0.0	0.0	0.0	0.0	0.1
<i>Cassia singueana</i>	24.9	13.9	0.0	0.0	0.0	0.0	0.0	0.0	0.0	0.3
<i>Combretum elaeagnoides</i>	0.0	0.0	9.5	0.0	0.0	0.0	0.0	0.0	0.0	0.4
<i>Combretum molle</i>	0.0	13.9	0.0	1.7	0.0	0.0	0.0	0.0	0.0	0.3
<i>Combretum collinum</i>	15.9	0.0	3.6	0.0	0.0	0.0	0.0	0.0	0.0	0.3
<i>Diospyros kirkii</i>	0.0	13.2	3.8	1.8	0.0	0.0	0.0	0.0	0.0	0.4
<i>Diplorhynchus condylocarpon</i>	24.9	14.7	0.0	0.0	0.0	0.0	0.0	0.0	0.0	0.3
<i>Julbernardia globiflora</i>	0.0	0.0	3.8	3.4	1.9	0.0	0.0	0.0	0.0	0.6
<i>Lannea stuhlmannii, Lannea</i>	0.0	0.0	0.0	0.0	1.0	0.0	0.0	0.0	0.0	0.1
<i>Lonchocarpus capassa</i>	0.0	0.0	7.1	0.0	0.0	0.0	0.0	0.0	0.0	0.3
<i>Markhamia obtusifolia</i>	0.0	15.3	0.0	0.0	0.0	0.0	0.0	0.0	0.0	0.1
<i>Markhamia tomentosa</i>	0.0	4.0	0.0	0.0	0.0	0.0	0.0	0.0	0.0	0.1
<i>Pericopsis angolensis</i>	0.0	0.0	0.0	1.7	0.0	0.0	0.0	0.0	0.0	0.1
<i>Piliostigma thonningii</i>	0.0	0.0	0.0	1.7	0.0	0.0	0.0	0.0	0.0	0.1
<i>Pterocarpus angolensis</i>	0.0	15.6	7.6	2.8	4.5	0.6	0.9	0.0	0.0	1.6
<i>Pterocarpus chrysothrix</i>	23.7	21.1	24.6	9.3	3.0	0.0	0.0	0.0	0.0	2.5
<i>Ricinodendron rautanenii</i>	0.0	0.0	0.0	0.0	0.0	0.6	0.0	0.0	0.0	0.1
<i>Sclerocarya caffra or birrea</i>	0.0	0.0	0.0	0.0	0.0	0.6	0.0	0.0	0.0	0.1
<i>Terminalia stenostachya</i>	0.0	44.9	0.0	1.7	0.0	0.5	0.0	0.0	0.0	0.8
<i>Zanha africana (female)</i>	0.0	0.0	2.7	0.0	0.0	0.0	0.0	0.0	0.0	0.1
<i>Ziziphus abyssinica</i>	0.0	13.4	0.0	0.0	0.0	0.0	0.0	0.0	0.0	0.1
SUMS:	105.3	198.9	66.7	25.1	10.4	2.3	0.9	0.0	0.0	9.3



4. INVENTORY OUTPUT: TREES PER HECTARE BY STAND, SPECIES, AND DIAMETER CLASS



TREES PER HECTARE - CHAKUMANIKA 437ha
16 plots, 24 species

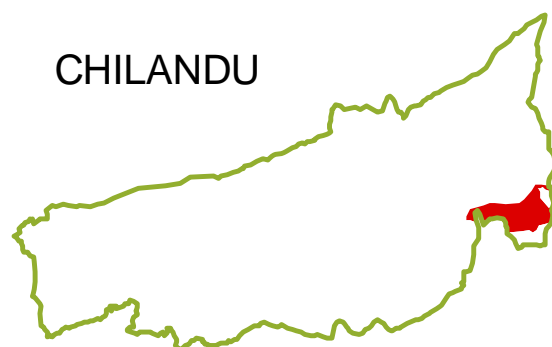


	5 cm	15 cm	25 cm	35 cm	45 cm	55 cm	65 cm	75 cm	85 cm+
OTHER construct, med	24.9	14.7	6.6	0.0	0.0	0.0	0.0	0.0	0.0
FUELWOOD	64.5	127.6	44.8	12.8	3.0	0.5	0.0	0.0	0.0
FOOD and ARTISANAL	15.9	41.0	3.8	4.5	0.0	0.6	0.0	0.0	0.0
BEEKEEPING	0.0	0.0	3.8	3.4	2.9	0.0	0.0	0.0	0.0
LESSER-KNOWN SAWT.	0.0	0.0	0.0	0.0	0.0	0.6	0.0	0.0	0.0
MOST-DESIRED SAWT.	0.0	15.6	7.6	4.5	4.5	0.6	0.9	0.0	0.0
GRAND TOTALS	80.4	184.2	60.0	25.1	10.4	2.3	0.9	0.0	0.0

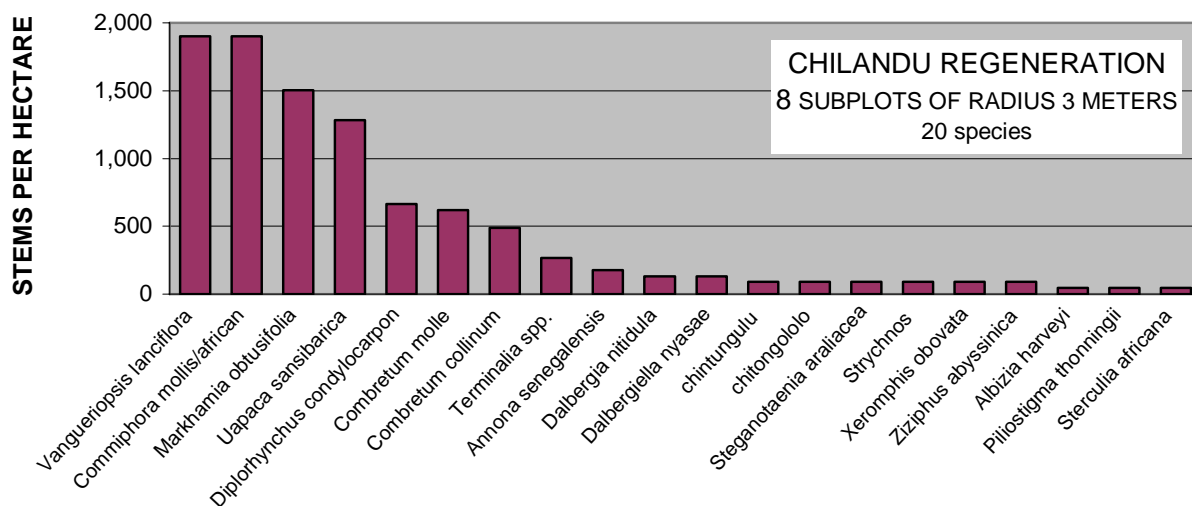
Chilandu PCF (349 ha; BA = 13m²)

Average Trees per HA in class:

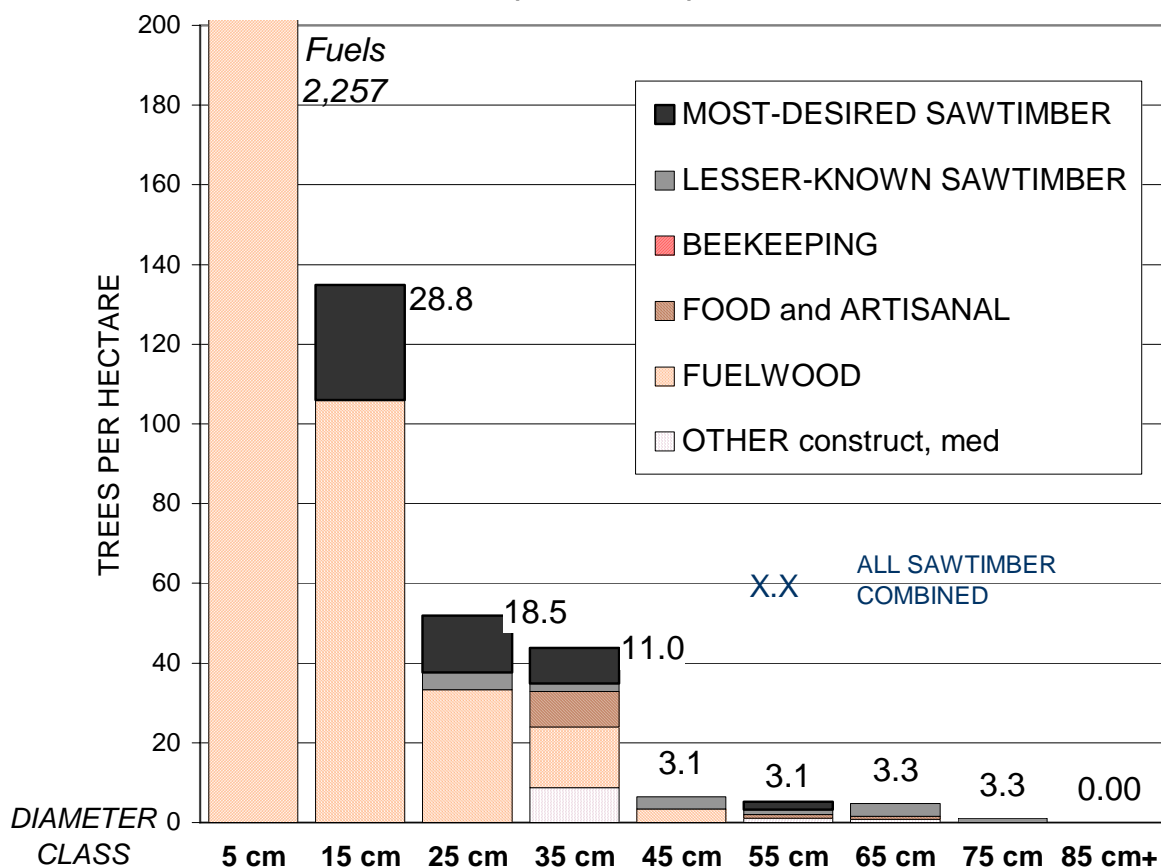
	5cm	15cm	25cm	35cm	45cm	55cm	65cm	75cm	85+cm	AvgBA
<i>Acacia nigrescens</i>	0.0	0.0	0.0	2.1	2.0	0.0	0.0	0.0	0.0	0.5
<i>Albizia harveyi</i>	77.8	0.0	0.0	0.0	0.0	0.0	0.0	0.0	0.0	0.3
<i>Burkea africana</i>	0.0	0.0	0.0	0.0	1.4	0.0	0.0	0.0	0.0	0.3
<i>Combretum fragrans</i>	0.0	0.0	0.0	2.5	0.0	0.0	0.0	0.0	0.0	0.3
<i>Combretum molle</i>	46.2	60.5	13.8	5.8	0.0	0.0	0.0	0.0	0.0	2.0
<i>Kirkia acuminata</i>	0.0	0.0	0.0	0.0	0.0	0.0	0.0	0.5	0.0	0.3
<i>Lonchocarpus capassa</i>	0.0	0.0	0.0	2.1	0.0	0.0	0.0	0.0	0.0	0.3
<i>Markhamia obtusifolia</i>	0.0	13.4	0.0	0.0	0.0	0.0	0.0	0.0	0.0	0.3
<i>Markhamia tomentosa</i>	2211.6	0.0	0.0	0.0	0.0	0.0	0.0	0.0	0.0	0.3
<i>Pseudolachnostylis</i>	0.0	0.0	0.0	2.9	0.0	0.0	0.0	0.0	0.0	0.3
<i>Pterocarpus angolensis</i>	0.0	28.8	14.2	9.0	0.0	2.0	0.0	0.0	0.0	2.5
<i>Pterocarpus chrysothrix</i>	0.0	0.0	3.6	0.0	0.0	0.0	0.0	0.0	0.0	0.3
<i>Ricinodendron rautanenii</i>	0.0	0.0	0.0	2.7	0.0	1.0	0.7	0.0	0.0	0.8
<i>Sclerocarya caffra or birrea</i>	0.0	0.0	4.3	2.0	3.1	1.1	3.3	0.5	0.0	2.5
<i>Sterculia africana</i>	0.0	0.0	0.0	6.1	0.0	0.0	0.0	0.0	0.0	0.5
<i>Terminalia stenostachya</i>	0.0	32.1	16.0	0.0	0.0	0.0	0.0	0.0	0.0	1.5
SUMS:	2335.6	134.8	51.9	35.1	6.4	4.2	4.0	1.0	0.0	12.5



4. INVENTORY OUTPUT: TREES PER HECTARE BY STAND, SPECIES, AND DIAMETER CLASS



TREES PER HECTARE - CHILANDU 349 ha
8 plots, 15 species



10-year Fallows (5,794 ha; BA = 3 to 10 m²)

Average Trees per HA in class:

10-year Fallow East	5cm	15cm	25cm	35cm	45cm	55cm	65cm	75cm	85+cm	AvgBA
<i>Acacia polyacantha</i>	0.0	0.0	56.0	21.3	0.0	0.0	0.0	0.0	0.0	5.0
<i>Annona senegalensis</i>	164.5	0.0	0.0	0.0	0.0	0.0	0.0	0.0	0.0	1.0
<i>Combretum molle</i>	0.0	98.0	0.0	0.0	0.0	0.0	0.0	0.0	0.0	1.0
<i>Lonchocarpus capassa</i>	0.0	45.7	0.0	0.0	0.0	0.0	0.0	0.0	0.0	1.0
<i>Pterocarpus angolensis</i>	0.0	124.9	0.0	0.0	0.0	0.0	0.0	0.0	0.0	1.0
<i>Pterocarpus chrysothrix</i>	0.0	117.8	0.0	0.0	0.0	0.0	0.0	0.0	0.0	1.0
SUMS:	164.5	386.4	56.0	21.3	0.0	0.0	0.0	0.0	0.0	10.0

REGENERATION -- STEMS PER HECTARE averaged over plots in stand

<i>Lumpunga</i>	5,305	<i>Combretum molle</i>	1,238
<i>Dalbergia melanoxylon</i>	2,653	<i>Lannea discolor female?</i>	354
<i>Zanha africana (male)</i>	1,768	<i>Lonchocarpus capassa</i>	177
<i>Markhamia obtusifolia</i>	1,415	<i>Pterocarpus chrysothrix</i>	177

TOTAL REGEN: 13,086

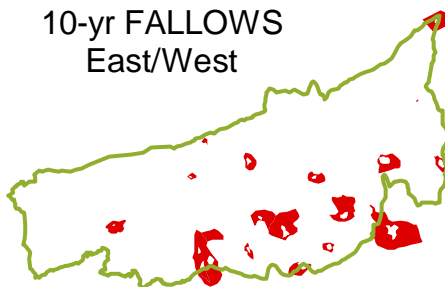
10-year Fallow West

10-year Fallow West	5cm	15cm	25cm	35cm	45cm	55cm	65cm	75cm	85+cm	AvgBA
<i>Acacia polyacantha</i>	0.0	14.0	0.0	0.0	0.0	0.0	0.0	0.0	0.0	0.3
<i>Albizia amara</i>	0.0	0.0	0.0	0.0	0.0	1.1	0.0	0.0	0.0	0.3
<i>Annona senegalensis</i>	70.2	0.0	0.0	0.0	0.0	0.0	0.0	0.0	0.0	0.3
<i>Bauhinia petersiana</i>	280.8	0.0	0.0	0.0	0.0	0.0	0.0	0.0	0.0	0.3
<i>Combretum molle</i>	0.0	0.0	0.0	3.4	0.0	0.0	0.0	0.0	0.0	0.3
<i>Markhamia obtusifolia</i>	291.5	0.0	0.0	0.0	0.0	0.0	0.0	0.0	0.0	0.6
<i>Sterculia quinqueloba</i>	0.0	11.5	0.0	0.0	0.0	0.0	0.0	0.0	0.0	0.3
<i>Stereospermum kunthianum</i>	280.8	0.0	0.0	0.0	0.0	0.0	0.0	0.0	0.0	0.3
<i>Ziziphus abyssinica</i>	112.8	0.0	0.0	0.0	0.0	0.0	0.0	0.0	0.0	0.6
SUMS:	1036.3	25.5	0.0	3.4	0.0	1.1	0.0	0.0	0.0	3.4

REGENERATION -- STEMS PER HECTARE averaged over plots in stand

<i>Bauhinia petersiana</i>	3,638	<i>Lonchocarpus capassa</i>	202
<i>Markhamia obtusifolia</i>	1,263	<i>Cassia abbreviata</i>	152
<i>Oncoba spinosa</i>	1,112	<i>Cassia singueana</i>	152
<i>Popowia obovata</i>	808	<i>Combretum collinum</i>	101
<i>Pterocarpus chrysothrix</i>	606	<i>Albizia versicolor</i>	101
<i>chintungulu</i>	505	<i>Peltophorum africanum</i>	101
<i>Markhamia tomentosa</i>	455	<i>Acacia polyacantha</i>	51
<i>Vangueriopsis lanciflora</i>	455	<i>Albizia anthunesiana</i>	51
<i>Combretum molle</i>	354	<i>Combretum fragrans</i>	51
<i>Terminalia mollis</i>	354	<i>Piliostigma thonningii</i>	51
<i>Stereospermum kunthianum</i>	303	<i>Steganotaenia araliacea</i>	51
<i>Phyllocosmus lemaireanus</i>	253	<i>Terminalia stenostachya</i>	51

TOTAL REGEN 10,307

10-yr FALLOWS
East/West

20-year Fallows (3,029ha; BA = 5 to 7 m²)

Average Trees per HA in class:

20-year Fallow East	5cm	15cm	25cm	35cm	45cm	55cm	65cm	75cm	85+cm	AvgBA
<i>Albizia amara</i>	0.0	0.0	0.0	0.0	0.0	1.2	0.0	0.0	0.0	0.3
<i>Annona senegalensis</i>	0.0	70.9	0.0	0.0	0.0	0.0	0.0	0.0	0.0	0.9
<i>Combretum elaeagnoides</i>	0.0	0.0	15.7	0.0	0.0	0.0	0.0	0.0	0.0	0.6
<i>Combretum fragrans</i>	0.0	0.0	0.0	3.7	0.0	0.0	0.0	0.0	0.0	0.3
<i>Combretum molle</i>	276.7	26.0	0.0	0.0	0.0	0.0	0.0	0.0	0.0	1.4
<i>Lannea discolor female</i>	0.0	0.0	0.0	7.2	0.0	0.0	0.0	0.0	0.0	0.6
<i>Ochna?</i>	0.0	0.0	5.4	0.0	0.0	0.0	0.0	0.0	0.0	0.3
<i>Pericopsis angolensis</i>	0.0	0.0	0.0	0.0	1.9	0.0	0.0	0.0	0.0	0.3
<i>Pterocarpus angolensis</i>	0.0	0.0	0.0	3.8	1.7	1.0	0.0	0.0	0.0	0.9
<i>Pterocarpus chrysothrix</i>	0.0	0.0	0.0	5.7	0.0	0.0	0.0	0.0	0.0	0.6
<i>Sclerocarya caffra or birrea</i>	0.0	0.0	0.0	0.0	0.0	2.6	0.0	0.0	0.0	0.6
<i>Xeroderris stuhlmannii</i>	0.0	0.0	0.0	0.0	0.0	0.0	1.0	0.0	0.0	0.3
<i>Zanha africana (male)</i>	0.0	17.3	0.0	0.0	0.0	0.0	0.0	0.0	0.0	0.3
SUMS:	276.7	114.2	21.1	20.5	3.5	4.8	1.0	0.0	0.0	7.1

REGENERATION -- STEMS PER HECTARE averaged over plots in stand

<i>Garcinia</i>	455	<i>Dalbergia nitidula</i>	101
<i>Steganotaenia araliacea</i>	253	<i>chintungulu</i>	51
<i>Terminalia stenostachya</i>	253	<i>Hexalobus monopetalus</i>	51
<i>Combretum fragrans</i>	101	<i>Ziziphus abyssinica</i>	51
		TOTAL REGEN:	1,314

20-year Fallow West

20-year Fallow West	5cm	15cm	25cm	35cm	45cm	55cm	65cm	75cm	85+cm	AvgBA
<i>Albizia versicolor</i>	0.0	0.0	0.0	6.7	0.0	0.0	0.0	0.0	0.0	0.7
<i>Bauhinia petersiana</i>	207.3	0.0	0.0	0.0	0.0	0.0	0.0	0.0	0.0	0.7
<i>Combretum molle</i>	235.9	0.0	0.0	0.0	0.0	0.0	0.0	0.0	0.0	0.7
<i>Diplorhynchus condylocarpon</i>	0.0	26.5	0.0	0.0	0.0	0.0	0.0	0.0	0.0	0.7
<i>Ficus brachylepis, F.craterostoma</i>	0.0	0.0	0.0	8.0	0.0	0.0	0.0	0.0	0.0	0.7
<i>Pterocarpus chrysothrix</i>	0.0	50.3	0.0	0.0	0.0	0.0	0.0	0.0	0.0	0.7
<i>Stereospermum kunthianum</i>	213.7	0.0	0.0	0.0	0.0	0.0	0.0	0.0	0.0	1.3
SUMS:	656.9	76.8	0.0	14.8	0.0	0.0	0.0	0.0	0.0	5.3

REGENERATION -- STEMS PER HECTARE averaged over plots in stand

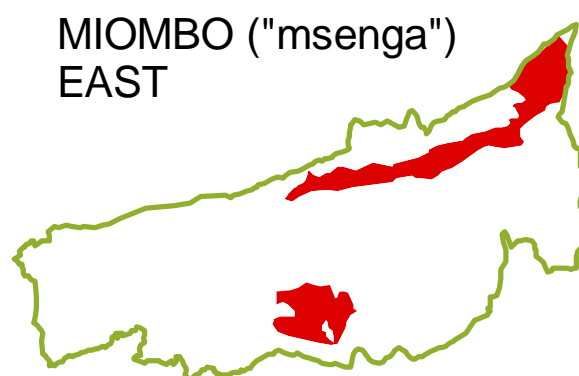
<i>Uapaca sansibarica</i>	6,838	<i>Terminalia mollis</i>	354
<i>Diplorhynchus condylocarpon</i>	3,537	<i>Bauhinia petersiana</i>	236
<i>Acacia nigrescens</i>	2,240	<i>Phyllocosmus lemaireanus</i>	236
<i>Combretum molle, collinum</i>	589	<i>Brachystegia allenii</i>	118
<i>Cassia abbreviata</i>	472	<i>chintungulu</i>	118
<i>Terminalia stenostachya</i>	472	<i>Kabambafila</i>	118
<i>Dichrostachys cinerea</i>	354	<i>Markhamia obtusifolia</i>	118
<i>Lonchocarpus capassa</i>	354	<i>Protea welwitschii</i>	118
		TOTAL REGEN:	16,270

NOTE ON 20-YEAR FALLOW AREAS:

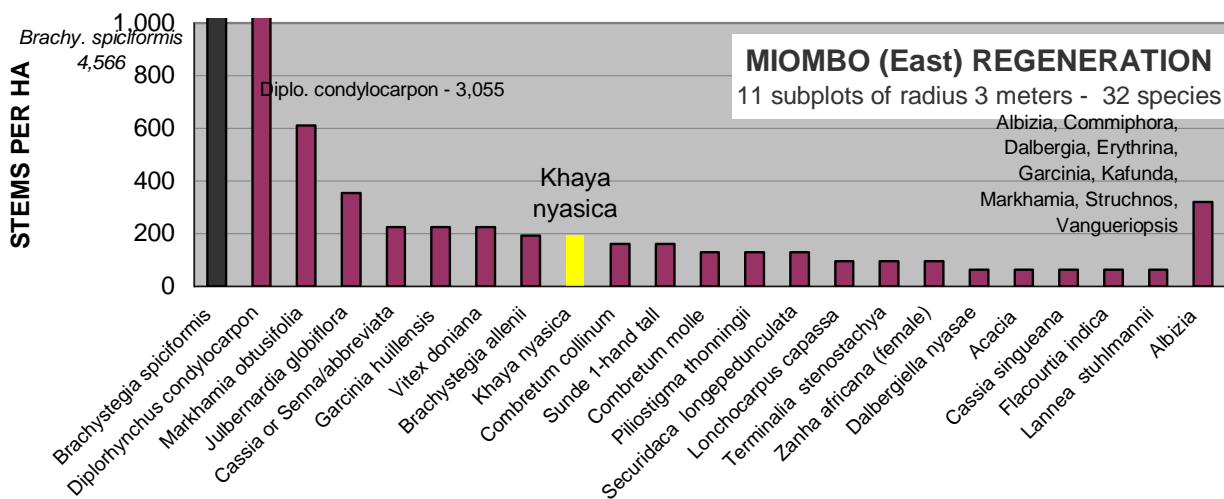
The hectares were estimated by visual estimation of the percentage of other, delimited stands covered by fallow fields of this type, using the image.

Miombo woodland – East side (1,755 ha; BA = 9m²)

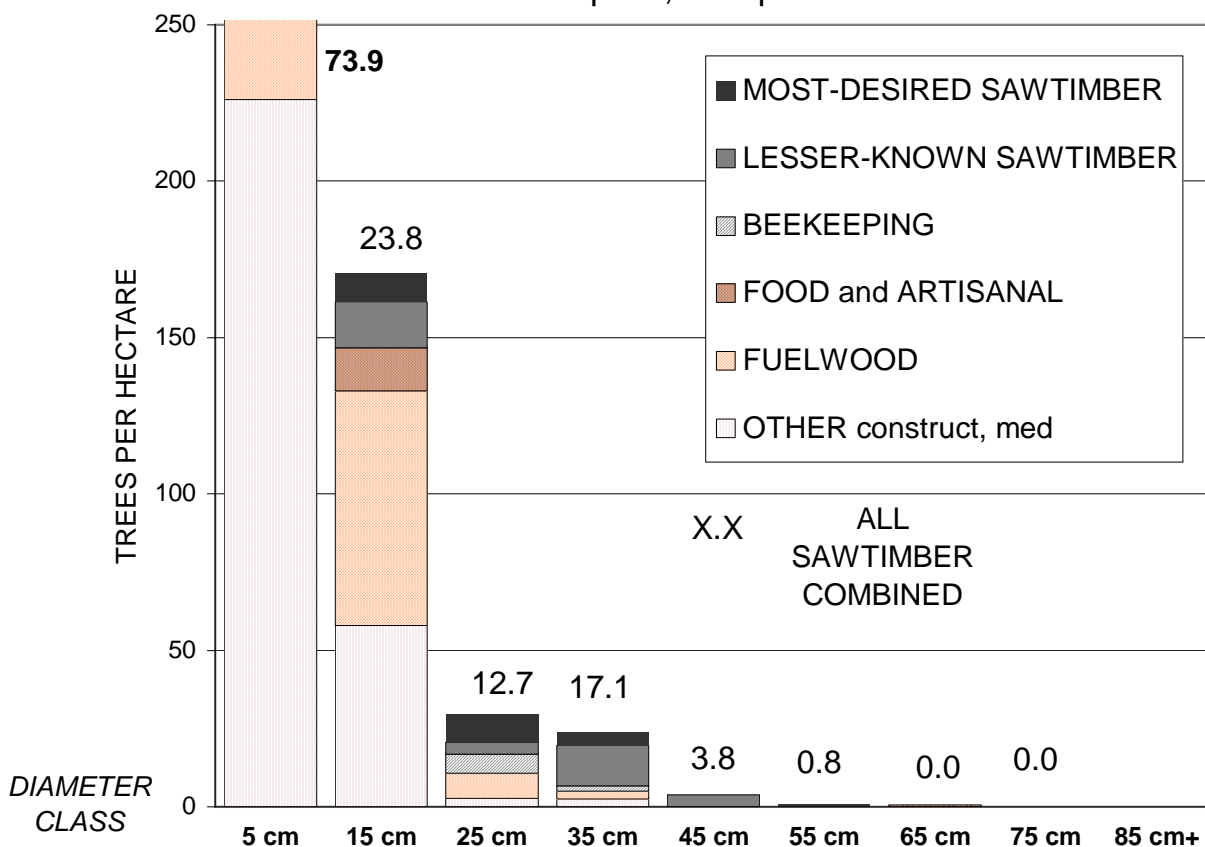
	Average Trees per HA in class:									AvgBA
	5cm	15cm	25cm	35cm	45cm	55cm	65cm	75cm	85+cm	
<i>Acacia</i>	48.3	0.0	0.0	0.0	0.0	0.0	0.0	0.0	0.0	0.4
<i>Acacia polyacantha</i>	0.0	0.0	0.0	2.5	0.0	0.0	0.0	0.0	0.0	0.2
<i>Azelia quanzensis</i>	0.0	9.0	0.0	1.6	0.0	0.0	0.0	0.0	0.0	0.4
<i>Bauhinia petersiana</i>	0.0	13.7	0.0	0.0	0.0	0.0	0.0	0.0	0.0	0.2
<i>Brachystegia allenii</i>	0.0	55.6	7.8	0.0	0.0	0.0	0.0	0.0	0.0	0.9
<i>Brachystegia spiciformis</i>	0.0	0.0	0.0	9.2	2.4	0.0	0.0	0.0	0.0	1.3
<i>Combretum fragrans</i>	0.0	21.4	0.0	0.0	0.0	0.0	0.0	0.0	0.0	0.2
<i>Combretum molle</i>	53.7	6.8	0.0	0.0	0.0	0.0	0.0	0.0	0.0	0.5
<i>Crossopteryx febrifuga</i>	40.1	0.0	0.0	0.0	0.0	0.0	0.0	0.0	0.0	0.2
<i>Cut stump</i>	0.0	0.0	0.0	0.0	1.1	0.0	0.0	0.0	0.0	0.2
<i>Dalbergiella nyasae</i>	36.2	0.0	0.0	0.0	0.0	0.0	0.0	0.0	0.0	0.2
<i>Dichrostachys cinerea</i>	28.6	0.0	0.0	0.0	0.0	0.0	0.0	0.0	0.0	0.2
<i>Diplorhynchus condylocarpon</i>	107.5	7.3	0.0	0.0	0.0	0.0	0.0	0.0	0.0	0.5
<i>Erythrina abyssinica</i>	0.0	29.3	0.0	0.0	0.0	0.0	0.0	0.0	0.0	0.4
<i>Julbernardia globiflora</i>	0.0	0.0	2.6	1.7	0.0	0.0	0.0	0.0	0.0	0.4
<i>Kirkia acuminata</i>	0.0	0.0	0.0	3.8	0.0	0.0	0.0	0.0	0.0	0.4
<i>Lanea discolor female?</i>	0.0	0.0	3.6	0.0	0.0	0.0	0.0	0.0	0.0	0.2
<i>Lonchocarpus capassa</i>	0.0	12.5	0.0	0.0	0.0	0.0	0.0	0.0	0.0	0.2
<i>Pericopsis angolensis</i>	0.0	0.0	0.0	2.5	0.0	0.0	0.0	0.0	0.0	0.2
<i>Pseudolachynostylis</i>	0.0	0.0	2.8	2.5	0.0	0.0	0.0	0.0	0.0	0.4
<i>Pterocarpus angolensis</i>	0.0	0.0	8.9	0.0	0.0	0.8	0.0	0.0	0.0	0.5
<i>Sterculia africana</i>	0.0	0.0	0.0	0.0	0.0	0.0	0.5	0.0	0.0	0.2
<i>Terminalia mollis, T. sericea, T.</i>	73.9	14.8	3.8	0.0	1.4	0.0	0.0	0.0	0.0	0.7
<i>Vitex doniana</i>	42.3	0.0	0.0	0.0	0.0	0.0	0.0	0.0	0.0	0.2
SUMS:	430.5	170.5	29.5	23.8	5.0	0.8	0.5	0.0	0.0	8.9



4. INVENTORY OUTPUT: TREES PER HECTARE BY STAND, SPECIES, AND DIAMETER CLASS



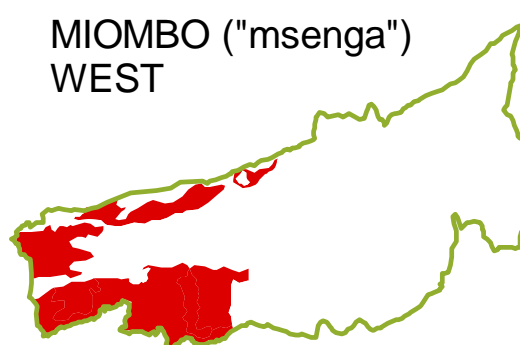
TREES PER HECTARE - East MIOMBO: 1,755 ha, 11 plots, 24 species



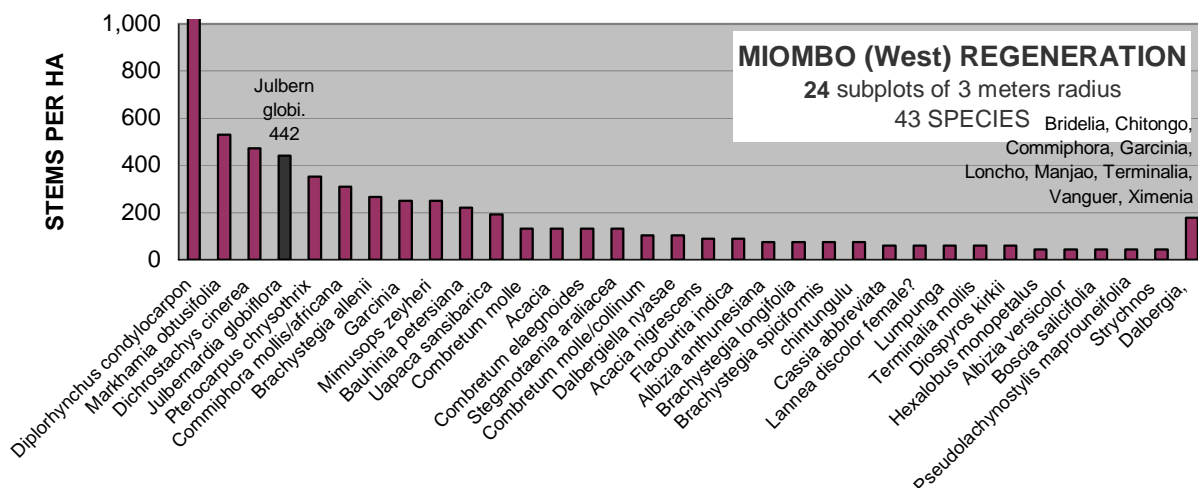
	5 cm	15 cm	25 cm	35 cm	45 cm	55 cm	65 cm	75 cm	85 cm+
OTHER construct, med	226.1	58.0	2.8	2.5	0.0	0.0	0.0	0.0	0.0
FUELWOOD	102.0	74.9	7.8	2.5	0.0	0.0	0.0	0.0	0.0
FOOD and ARTISANAL	28.6	13.7	0.0	0.0	0.0	0.0	0.5	0.0	0.0
BEEKEEPING	0.0	0.0	6.2	1.7	0.0	0.0	0.0	0.0	0.0
LESSER-KNOWN SAWT	73.9	14.8	3.8	13.0	3.8	0.0	0.0	0.0	0.0
MOST-DESIRED SAWT.	0.0	9.0	8.9	4.1	0.0	0.8	0.0	0.0	0.0
GRAND TOTALS	430.5	170.5	29.5	23.8	3.8	0.8	0.5	0.0	0.0

Miombo woodland – West side (3,054 ha; BA = 10m²)

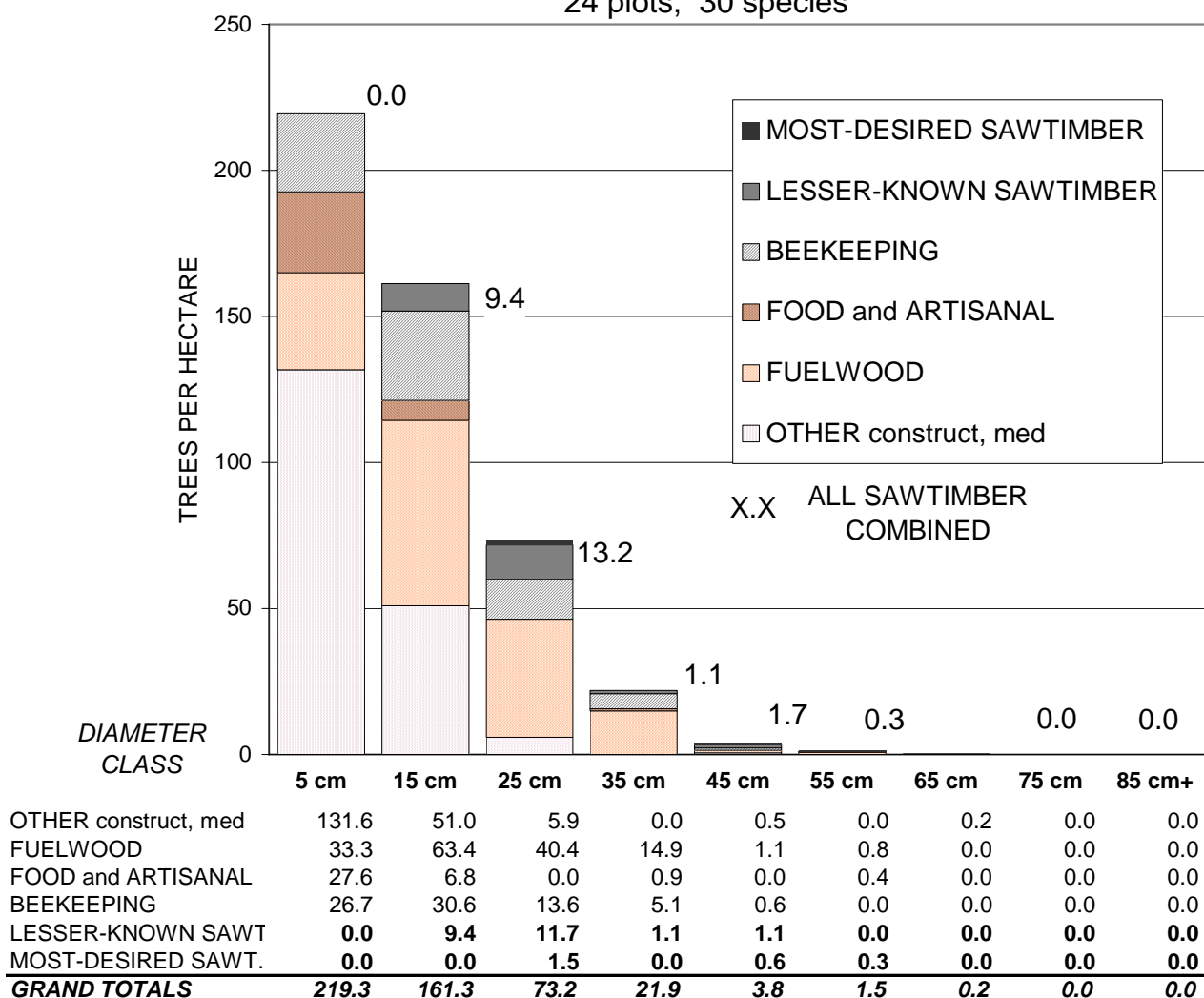
	Average Trees per HA in class:									AvgBA
	5cm	15cm	25cm	35cm	45cm	55cm	65cm	75cm	85+cm	
<i>Acacia</i>	0.0	0.0	2.0	0.0	0.0	0.0	0.0	0.0	0.0	0.1
<i>Azelia quanzensis</i>	0.0	0.0	0.0	0.0	0.6	0.0	0.0	0.0	0.0	0.1
<i>Bauhinia petersiana</i>	27.6	0.0	0.0	0.0	0.0	0.0	0.0	0.0	0.0	0.1
<i>Boscia salicifolia</i>	0.0	0.0	0.0	0.0	0.0	0.0	0.2	0.0	0.0	0.1
<i>Brachystegia allenii</i>	0.0	33.0	26.1	9.0	0.5	0.4	0.0	0.0	0.0	2.8
<i>Brachystegia boehmii</i>	0.0	0.0	0.0	1.0	0.0	0.0	0.0	0.0	0.0	0.1
<i>Brachystegia longifolia</i>	0.0	0.0	0.0	0.9	0.0	0.0	0.0	0.0	0.0	0.1
<i>Brachystegia sp.</i>	0.0	0.0	3.6	1.7	0.0	0.0	0.0	0.0	0.0	0.3
<i>Brachystegia spiciformis</i>	0.0	0.0	5.6	1.1	1.1	0.0	0.0	0.0	0.0	0.5
<i>Brachystegia utilis</i>	0.0	0.0	1.9	1.0	0.0	0.0	0.0	0.0	0.0	0.2
<i>Cassia singueana /abbreviata</i>	0.0	7.4	0.0	0.0	0.0	0.0	0.0	0.0	0.0	0.1
<i>Combretum elaeagnoides</i>	0.0	6.8	0.0	0.0	0.0	0.0	0.0	0.0	0.0	0.1
<i>Combretum fragrans</i>	0.0	0.0	0.0	0.0	0.5	0.0	0.0	0.0	0.0	0.1
<i>Combretum molle</i>	0.0	4.0	0.0	0.0	0.0	0.0	0.0	0.0	0.0	0.1
<i>Combretum collinum</i>	29.5	3.6	0.0	0.0	0.0	0.0	0.0	0.0	0.0	0.2
<i>Diospyros kirkii</i>	0.0	3.9	0.0	0.0	0.0	0.0	0.0	0.0	0.0	0.1
<i>Diplorhynchus condylocarpon</i>	102.2	10.3	5.9	0.0	0.0	0.0	0.0	0.0	0.0	0.9
<i>Dombeya rotundifolia</i>	21.1	0.0	0.0	0.0	0.0	0.0	0.0	0.0	0.0	0.1
<i>Erythrina abyssinica</i>	0.0	9.1	0.0	0.0	0.0	0.0	0.0	0.0	0.0	0.2
<i>Julbernardia globiflora</i>	0.0	17.1	13.6	5.1	0.6	0.0	0.0	0.0	0.0	1.5
<i>Lannea stuhlmannii</i>	0.0	3.5	0.0	0.0	0.0	0.0	0.0	0.0	0.0	0.1
<i>Lannea discolor female?</i>	26.7	10.0	0.0	0.0	0.0	0.0	0.0	0.0	0.0	0.2
<i>Markhamia obtusifolia</i>	12.3	9.4	0.0	0.0	0.0	0.0	0.0	0.0	0.0	0.2
<i>Piliostigma thonningii</i>	0.0	2.9	0.0	0.0	0.0	0.0	0.0	0.0	0.0	0.1
<i>Pseudolachynostylis</i>	0.0	28.0	0.0	0.0	0.0	0.0	0.0	0.0	0.0	0.6
<i>Pterocarpus angolensis</i>	0.0	0.0	1.5	0.0	0.0	0.3	0.0	0.0	0.0	0.2
<i>Pterocarpus chrysothrix</i>	0.0	2.8	6.8	1.1	0.6	0.4	0.0	0.0	0.0	0.6
<i>Terminalia stenostachya</i>	0.0	0.0	0.0	1.1	0.0	0.0	0.0	0.0	0.0	0.1
<i>Terminalia mollis, sericea</i>	0.0	9.4	6.1	0.0	0.0	0.0	0.0	0.0	0.0	0.3
<i>Xeroderris stuhlmannii</i>	0.0	0.0	0.0	0.0	0.0	0.4	0.0	0.0	0.0	0.1
SUMS:	219.3	161.3	73.2	21.9	3.8	1.5	0.2	0.0	0.0	9.9



4. INVENTORY OUTPUT: TREES PER HECTARE BY STAND, SPECIES, AND DIAMETER CLASS



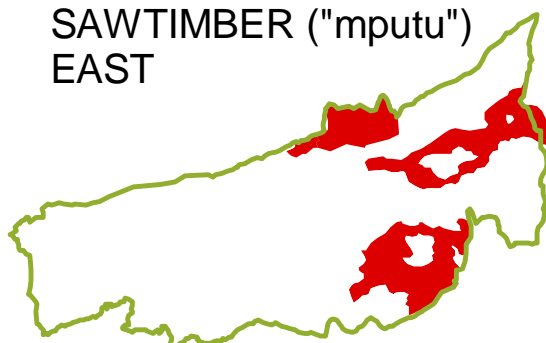
TREES PER HECTARE - West MIOMBO: 3,054 ha
24 plots, 30 species



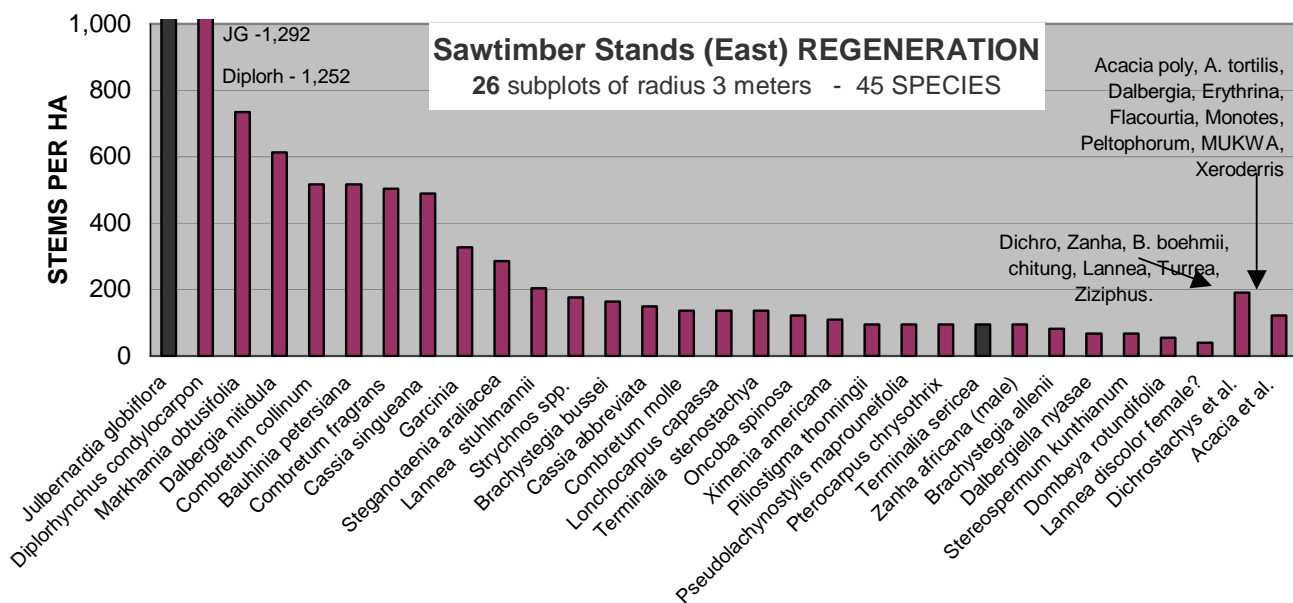
Sawtimber stands – East side (2,776ha; BA = 10m²)

Average Trees per HA in class:

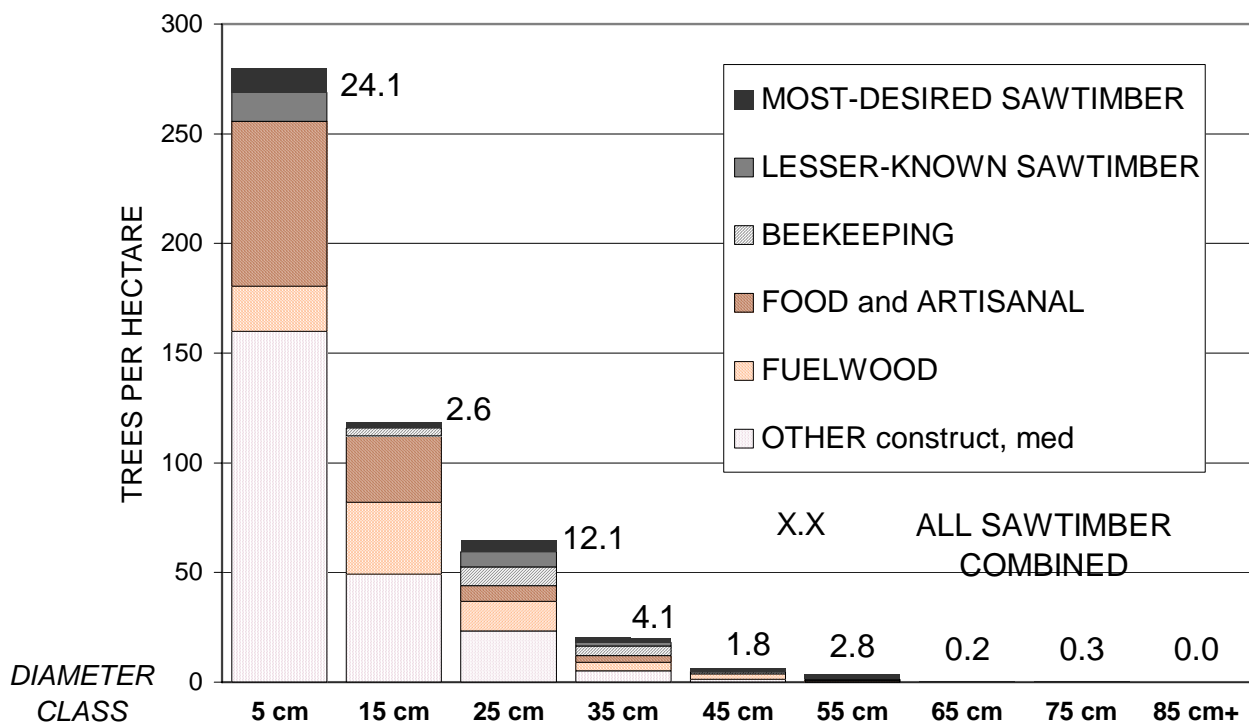
	5cm	15cm	25cm	35cm	45cm	55cm	65cm	75cm	85+cm	AvgBA
<i>Acacia</i>	0.0	0.0	1.1	0.0	0.0	0.0	0.0	0.0	0.0	0.1
<i>Acacia polyacantha</i>	0.0	0.0	3.6	0.0	0.4	0.0	0.0	0.0	0.0	0.2
<i>Acacia sieberana</i>	0.0	0.0	2.0	0.0	0.0	0.0	0.0	0.0	0.0	0.1
<i>Azelia quanzensis</i>	0.0	0.0	0.0	0.0	0.0	0.0	0.2	0.0	0.0	0.1
<i>Albizia anthunesiana</i>	0.0	0.0	0.0	0.6	0.0	0.4	0.0	0.0	0.0	0.2
<i>Albizia versicolor</i>	0.0	0.0	0.0	0.9	0.0	0.0	0.0	0.0	0.0	0.1
<i>Brachystegia allenii</i>	0.0	9.5	1.2	0.0	0.0	0.0	0.0	0.0	0.0	0.2
<i>Brachystegia boehmii</i>	0.0	0.0	0.0	3.2	1.0	0.0	0.0	0.0	0.0	0.5
<i>Brachystegia bussei</i>	0.0	9.7	4.5	0.0	0.0	0.0	0.0	0.0	0.0	0.4
<i>Brachystegia longifolia</i>	0.0	0.0	0.0	2.0	0.0	0.0	0.0	0.0	0.0	0.2
<i>Brachystegia spiciformis</i>	0.0	0.0	2.7	0.9	0.0	0.0	0.0	0.0	0.0	0.2
<i>Cassia abbreviata</i>	0.0	0.0	0.0	0.0	0.0	0.4	0.0	0.0	0.0	0.1
<i>Combretum elaeagnoides</i>	0.0	5.0	0.0	0.0	0.0	0.0	0.0	0.0	0.0	0.1
<i>Combretum fragrans</i>	0.0	5.2	2.4	0.0	0.5	0.0	0.0	0.0	0.0	0.2
<i>Combretum molle</i>	0.0	11.0	9.5	2.7	0.0	0.0	0.0	0.0	0.0	0.8
<i>Dalbergia nitidula</i>	0.0	0.0	1.9	1.0	0.0	0.0	0.0	0.0	0.0	0.2
<i>Dalbergiella nyasae</i>	84.8	0.0	0.0	0.0	0.0	0.0	0.0	0.0	0.0	0.1
<i>Diospyros kirkii</i>	0.0	5.6	0.0	0.0	0.0	0.0	0.0	0.0	0.0	0.1
<i>Diplorhynchus condylocarpon</i>	75.0	7.4	1.1	1.5	0.0	0.4	0.0	0.0	0.0	0.8
<i>Julbernardia globiflora</i>	0.0	3.4	8.6	4.5	0.5	0.0	0.0	0.0	0.0	0.9
<i>Lanea discolor female</i>	0.0	0.0	0.0	0.0	0.5	0.0	0.0	0.0	0.0	0.1
<i>Lonchocarpus capassa</i>	0.0	0.0	0.0	0.7	0.4	0.0	0.0	0.0	0.0	0.2
<i>Markhamia obtusifolia</i>	0.0	3.7	1.3	0.0	0.0	0.0	0.0	0.0	0.0	0.2
<i>Pericopsis angolensis</i>	10.9	0.0	3.1	1.8	0.5	0.0	0.0	0.2	0.0	0.5
<i>Piliostigma thonningii</i>	0.0	0.0	1.1	0.0	0.0	0.0	0.0	0.0	0.0	0.1
<i>Pseudolachnostylis</i>	0.0	12.5	7.2	0.0	1.0	0.0	0.0	0.0	0.0	0.6
<i>Pterocarpus angolensis</i>	0.0	2.6	2.4	0.0	0.9	1.7	0.0	0.2	0.0	0.8
<i>Sclerocarya caffra or birrea</i>	0.0	0.0	0.0	0.8	0.0	0.7	0.0	0.0	0.0	0.2
<i>Terminalia stenostachya</i>	9.8	0.0	3.0	0.0	0.4	0.0	0.0	0.0	0.0	0.3
<i>Terminalia mollis, T. sericea, T.</i>	13.2	0.0	4.0	0.0	0.4	0.0	0.0	0.0	0.0	0.3
<i>Vangueria infausta (if hairy);</i>	11.1	8.5	0.0	0.0	0.0	0.0	0.0	0.0	0.0	0.2
<i>Zanha africana (male)</i>	0.0	9.5	0.0	0.0	0.0	0.0	0.0	0.0	0.0	0.2
<i>Ziziphus abyssinica</i>	75.1	24.7	4.1	0.0	0.0	0.0	0.0	0.0	0.0	0.6
SUMS:	279.9	118.5	64.8	20.6	6.5	3.6	0.2	0.3	0.0	9.6

SAWTIMBER ("mputu")
EAST

4. INVENTORY OUTPUT: TREES PER HECTARE BY STAND, SPECIES, AND DIAMETER CLASS



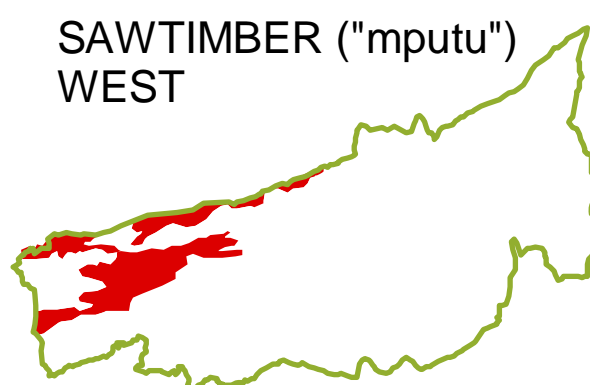
TREES PER HECTARE - East SAWTIMBER 2,775 ha
26 plots, 33 species



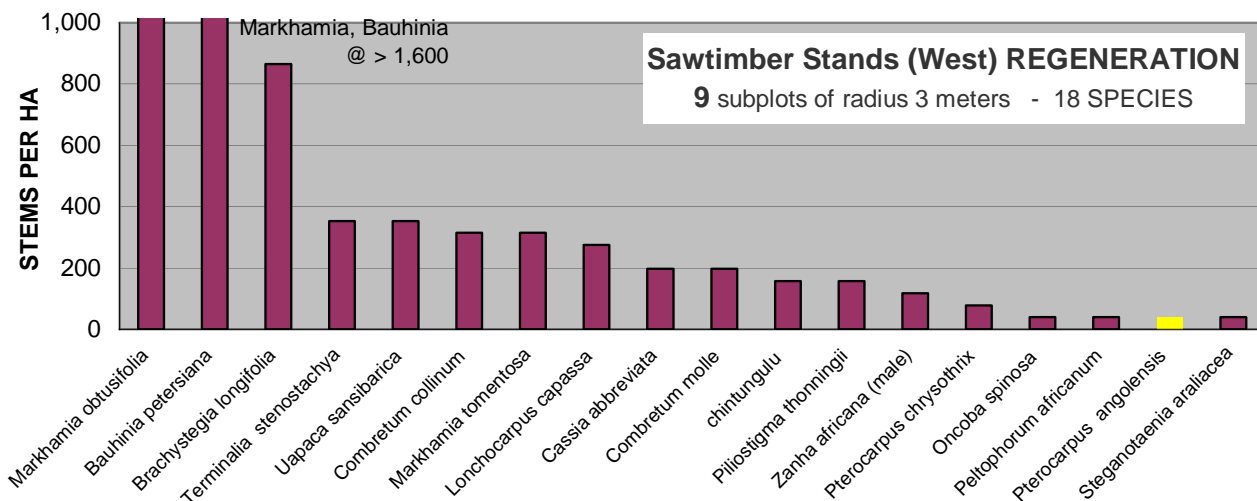
	5 cm	15 cm	25 cm	35 cm	45 cm	55 cm	65 cm	75 cm	85 cm+
OTHER construct, med	159.8	49.3	23.5	5.2	1.5	0.4	0.0	0.0	0.0
FUELWOOD	20.9	32.8	13.4	3.9	2.3	0.4	0.0	0.0	0.0
FOOD and ARTISANAL	75.1	30.3	7.1	2.9	0.0	0.0	0.0	0.0	0.0
BEEKEEPING	0.0	3.4	8.6	4.5	0.9	0.0	0.0	0.0	0.0
LESSER-KNOWN SAWT.	13.2	0.0	6.7	1.7	0.4	0.7	0.0	0.0	0.0
MOST-DESIRED SAWT.	10.9	2.6	5.4	2.4	1.4	2.1	0.2	0.3	0.0
GRAND TOTALS	279.9	118.5	64.8	20.6	6.5	3.6	0.2	0.3	0.0

Sawtimber stand – West side (995ha; BA = 13m²)

	Average Trees per HA in class:									AvgBA
	5cm	15cm	25cm	35cm	45cm	55cm	65cm	75cm	85+cm	
<i>Acacia polyacantha</i>	0.0	0.0	14.9	0.0	0.0	0.0	0.0	0.0	0.0	0.7
<i>Albizia versicolor</i>	0.0	28.5	0.0	0.0	0.0	0.0	0.0	0.0	0.0	0.7
<i>Bauhinia petersiana</i>	128.2	9.2	0.0	0.0	0.0	0.0	0.0	0.0	0.0	0.4
<i>Brachystegia longifolia</i>	0.0	0.0	4.8	2.0	0.0	0.0	0.0	0.0	0.0	0.4
<i>Cassia abbreviata</i>	0.0	9.8	0.0	0.0	0.0	0.0	0.0	0.0	0.0	0.2
<i>Combretum molle</i>	176.6	41.0	0.0	2.6	0.0	0.0	0.0	0.0	0.0	1.6
<i>Combretum collinum</i>	0.0	0.0	10.3	0.0	0.0	0.0	0.0	0.0	0.0	0.4
<i>Diplorhynchus condylocarpon</i>	34.9	27.9	0.0	0.0	0.0	0.0	0.0	0.0	0.0	0.7
<i>Markhamia obtusifolia</i>	0.0	0.0	0.0	0.0	1.8	0.0	0.0	0.0	0.0	0.2
<i>Markhamia tomentosa</i>	0.0	0.0	4.5	0.0	0.0	0.0	0.0	0.0	0.0	0.2
<i>Piliostigma thonningii</i>	0.0	0.0	0.0	2.1	3.2	0.0	0.0	0.0	0.0	0.7
<i>Pterocarpus angolensis</i>	0.0	0.0	0.0	8.2	0.0	0.0	0.0	0.0	0.0	0.7
<i>Pterocarpus chrysothrix</i>	0.0	0.0	29.2	4.6	0.0	0.9	0.0	0.0	0.0	2.0
<i>Sclerocarya caffra or birrea</i>	0.0	10.8	0.0	0.0	0.0	0.0	0.6	0.0	0.0	0.4
<i>Stereospermum kunthianum</i>	0.0	27.6	0.0	0.0	0.0	0.0	0.0	0.0	0.0	0.4
<i>Strychnos cocculoides</i>	0.0	7.3	11.9	0.0	0.0	0.0	0.0	0.0	0.0	0.7
<i>Strychnos spinosa</i>	0.0	0.0	6.2	0.0	0.0	0.0	0.0	0.0	0.0	0.2
<i>Terminalia stenostachya</i>	0.0	0.0	0.0	7.5	0.0	0.0	0.0	0.0	0.0	0.7
<i>Terminalia mollis, sericea</i>	44.2	41.0	5.4	0.0	0.0	0.0	0.7	0.0	0.0	1.1
<i>Zanha africana (male)</i>	117.3	0.0	0.0	0.0	0.0	0.0	0.0	0.0	0.0	0.4
SUMS:	501.2	203.2	87.2	26.9	5.0	0.9	1.3	0.0	0.0	12.9



4. INVENTORY OUTPUT: TREES PER HECTARE BY STAND, SPECIES, AND DIAMETER CLASS



TREES PER HECTARE - West SAWTIMBER: 995 ha
9 plots, 20 species

